

CHARLES E. CONDRA

Registered Professional Civil Engineer

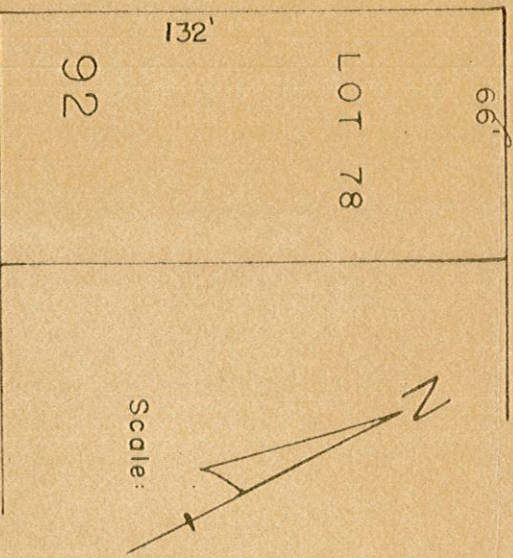
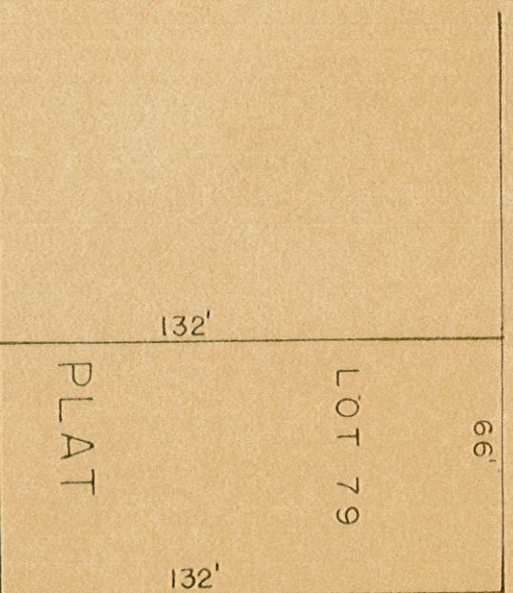
INDIANA NO. 2333

P. O. BOX 27

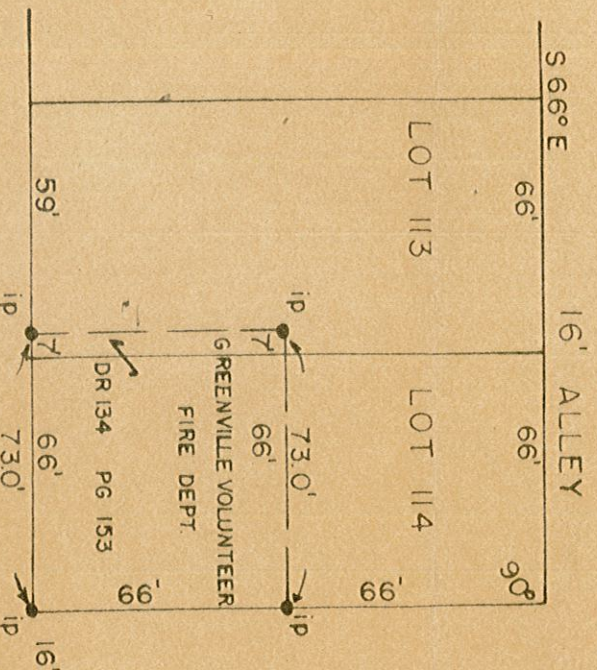
NEW ALBANY, IND.

MAIN

STREET - 66'



Scale: 1" = 50'



HARRISON

AVENUE - 60'

August 7, 1953

This is to certify that I have made a survey of a part of Lots No. 113 and 114 of Plat No. 92 of the Floyd County Record of Plats and set iron pipe corners as shown on the map above.

Charles E. Condra
Charles E. Condra, P.E.